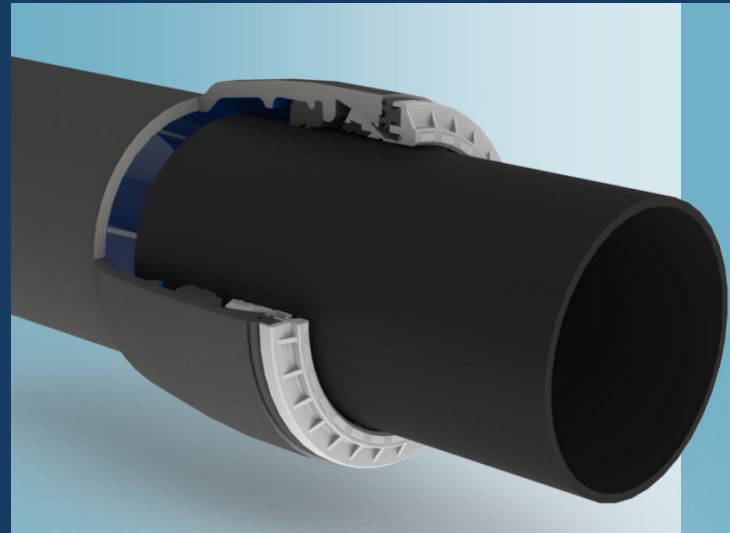


FITTINGS AND VALVES

DRAINAGE TECHNOLOGY

GLASS LINING TECHNOLOGIES

JOBGING FOUNDRY



Laying Instructions

for ductile cast iron
valves and fittings

for the connection of PE-HD pipes
with thrust-resistant joint system
NOVO-Grip® III up to PN 16

Düker GmbH & Co. KGaA

Hauptstraße 39-41
D – 63846 Laufach

Tel. +49 6093 87-560

Fax +49 6093 87-246

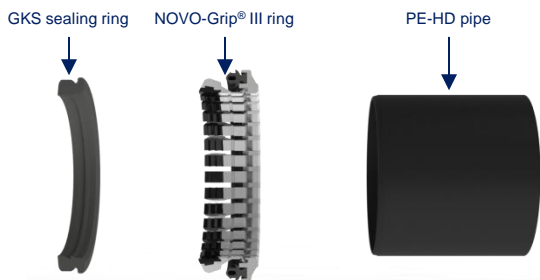
Internet: www.dueker.de

E-Mail: sales.fittings-valves@dueker.de

Laying Instructions for NOVO-Grip® III

to be used with all pipe types as per German DIN 8074/8077

Installation



- Clean the socket and the spigot to be inserted.
- Insert the GKS sealing ring into the socket.
- Insert the NOVO-Grip® III ring into the pre-chamber.
- Round off the spigot to be inserted.
- Insert the stabilising bush on its whole length.
- Drive the spreading wedge into the stabilising bush. Cut off the protruding end of the spreading wedge so it is flush with the bush.
- Push the pipe into the socket through the NOVO-Grip® III ring until it touches the sealing ring centrally.

- Connect the joint with commercially available laying tools depending on the diameter.
- Avoid any deviation during installation!

Remarks: When laying PE-HD pipes consider the length differences caused by temperature changes.

Example:

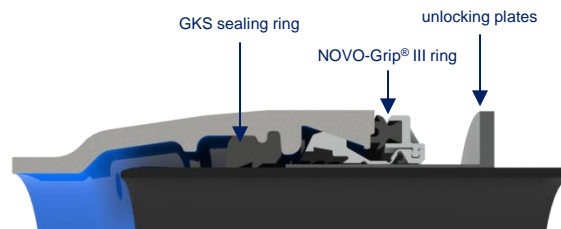
PE-HD pipe length 10 m, $\Delta t = 10^\circ$, $\Delta l \approx 20$ mm

After connecting the joint in a centred and aligned position, the pipes can be deflected up to 3° .

An angle of 1° results in a deviation of a 6 m pipe from the axis of the connected pipe or fitting by approx. 10 cm; for 3° it is approx. 30 cm.

Attention: Fittings and valves with the nominal diameter DN 200 for pipe diameter 225 mm do not have a standard Novo socket. These items have an adapted geometry and are marked with an additional label "for PE-HD pipes". Please consider this when ordering the fittings and valves.

Dismantling



- Push the pipe spigot into the base of the socket.
- Spread lubricant on the unlocking plates and drive them in all around the connection with a punching tool.
- Disconnect the joint with the laying tool.